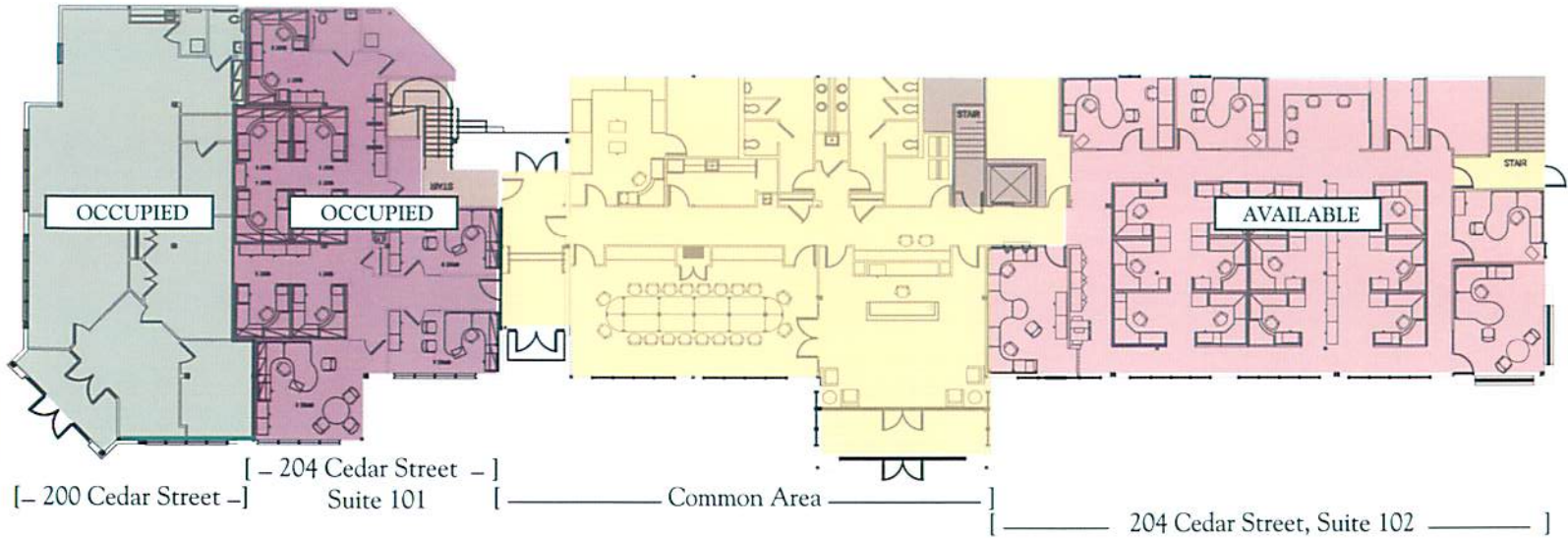


— 204 CEDAR STREET, CAMBRIDGE, MARYLAND —



1ST FLOOR PLAN



FLOOR SPACE

- 200 Cedar Street (no common area): approx. 2,000 SF (*self-contained unfurnished unit with separate pantry, bathroom and conference room*)
 - 204 Cedar Street - Suite 101 (with common area): approx. 2,500 SF
 - 204 Cedar Street - Suite 102 (with common area): approx. 4,500 SF
 - 204 Cedar Street - Suite 201 (with common area): approx. 7,500 SF
 - 204 Cedar Street - Suite 202 (with common area): approx. 4,700 SF
- } Can be combined as Suite 200

2ND FLOOR PLAN

Note: The second floor can either be divided into two separate offices, Suites 201 and 202, or combined into one large space, Suite 200.

